

INSTITUT DE LA GOUVERNANCE  
DES SYSTÈMES D'INFORMATION  
fondé par

A F A I

CIGREF

The place of  
IT Governance in the  
Enterprise Governance



Balancing  
Performance and Conformance

# Contents

---

1. Introduction
2. Enterprise Governance
3. Corporate Governance
4. Business Governance
5. Positioning IT Governance
6. What is IT Governance? 7 pillars
7. Practices of IT Governance
8. Contribution of the 10 practices to the 7 pillars
9. Conclusion

# Introduction

---

While many organizations recognize the potential benefits that technology can yield, the successful ones also understand and manage the risks associated with implementing new technologies. Among the enterprise's challenges and concerns are:

- Aligning IT strategy with the business strategy
- Cascading strategy and goals down into the enterprise
- Providing organizational structures that facilitate the implementation of strategy and goals
- Insisting that an IT control framework be adopted and implemented
- Measuring IT's performance

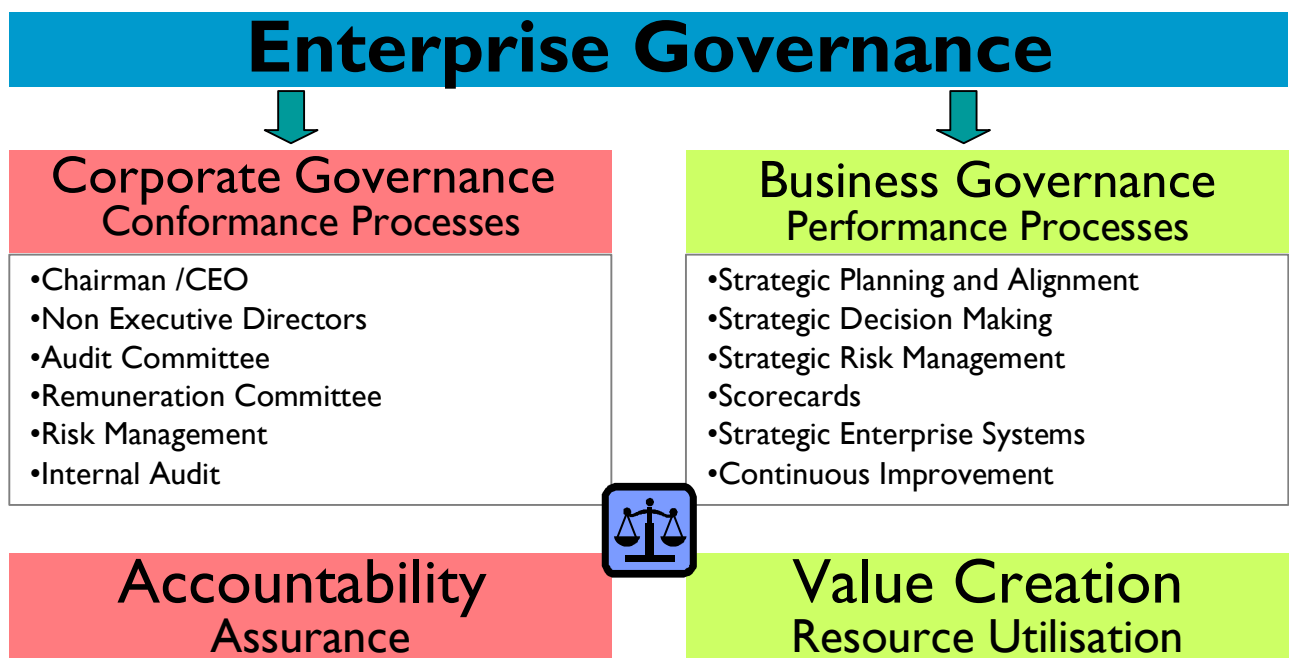
Effective and timely measures aimed at addressing these top management concerns need to be promoted by the governance layer of an enterprise. Hence, boards and executive management need to extend governance, already exercised over the enterprise, to IT.

*Source: IT Governance Institute*

# Enterprise Governance

---

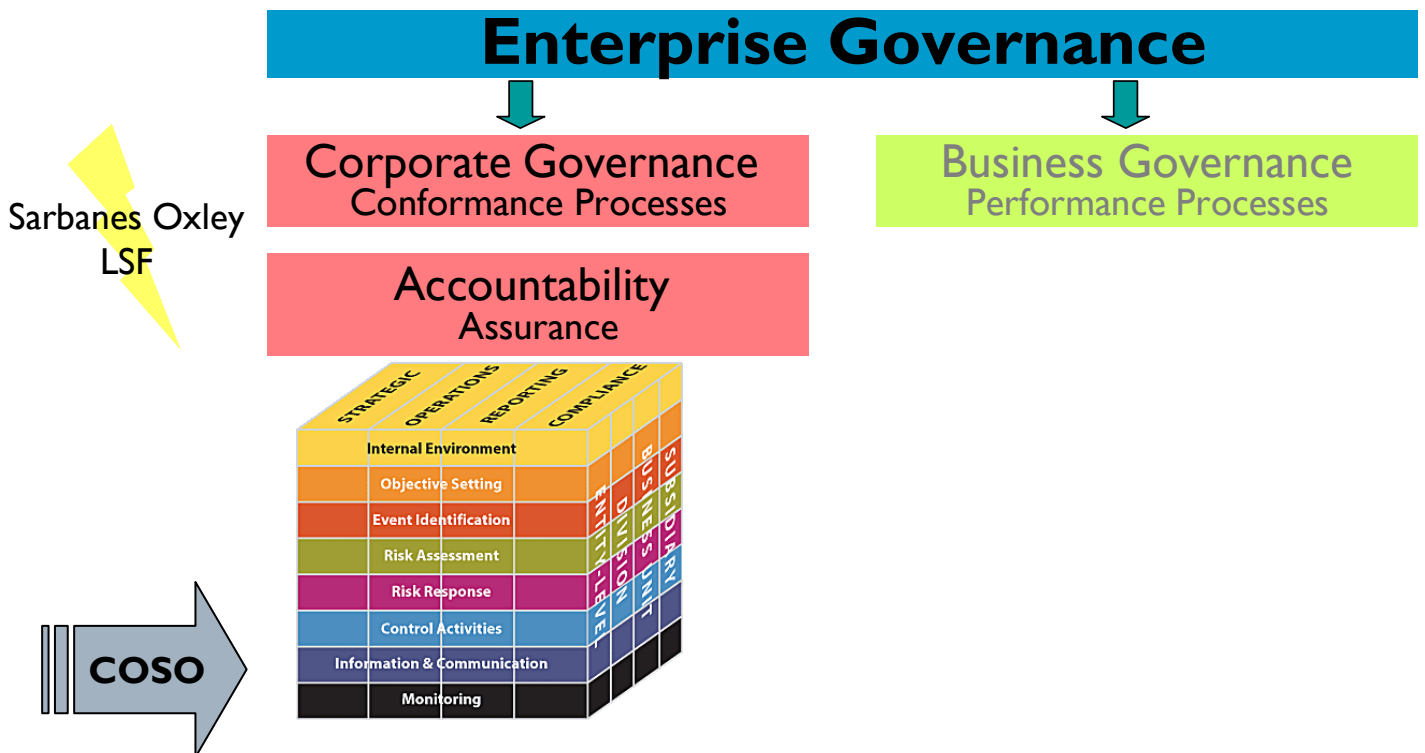
Enterprise Governance is a balance between Performance and Conformity.



Source: adapted from CIMA

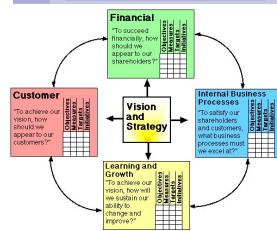
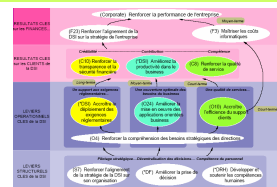
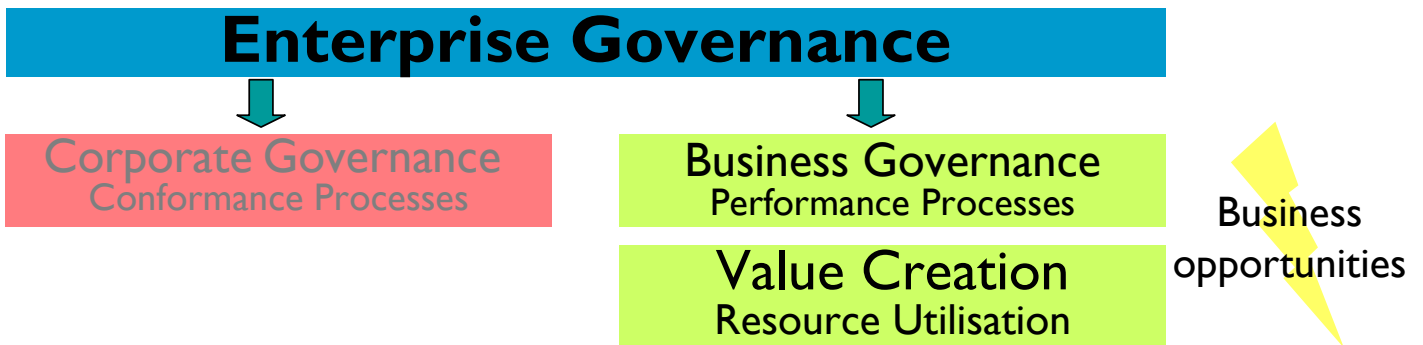
# Corporate Governance

- ❑ Focused on Conformity and Control
- ❑ Ensure legality and liability



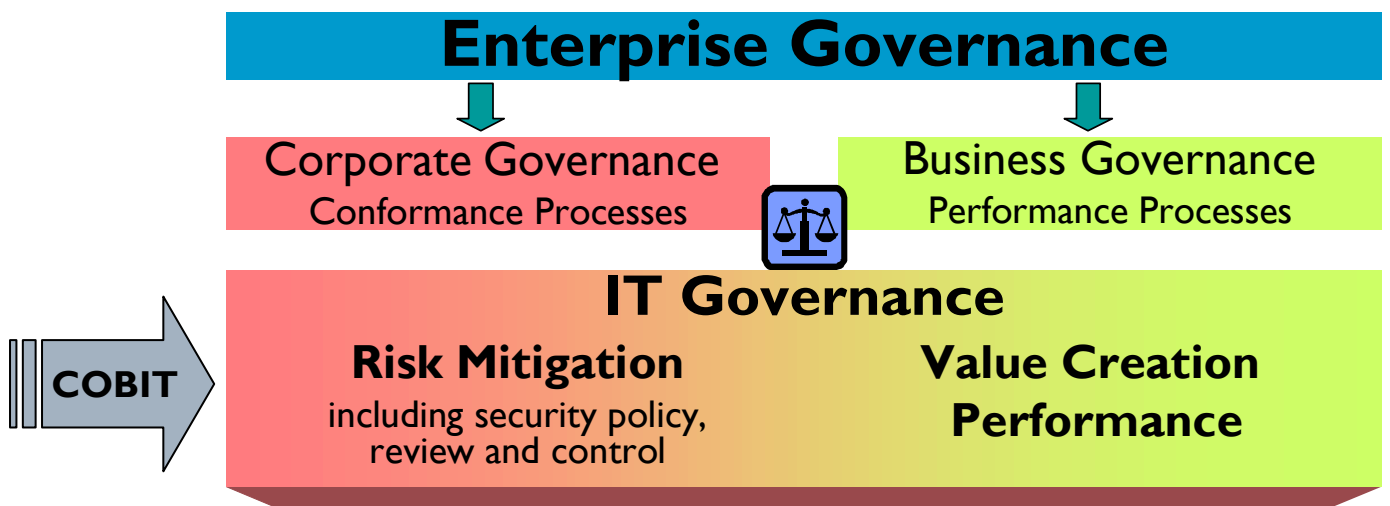
# Business Governance

- ❑ Focused on Business Value Creation
- ❑ Facilitate the decision making process



# Positioning IT Governance

- IT governance supports both Corporate and Business Governance inside Enterprise Governance



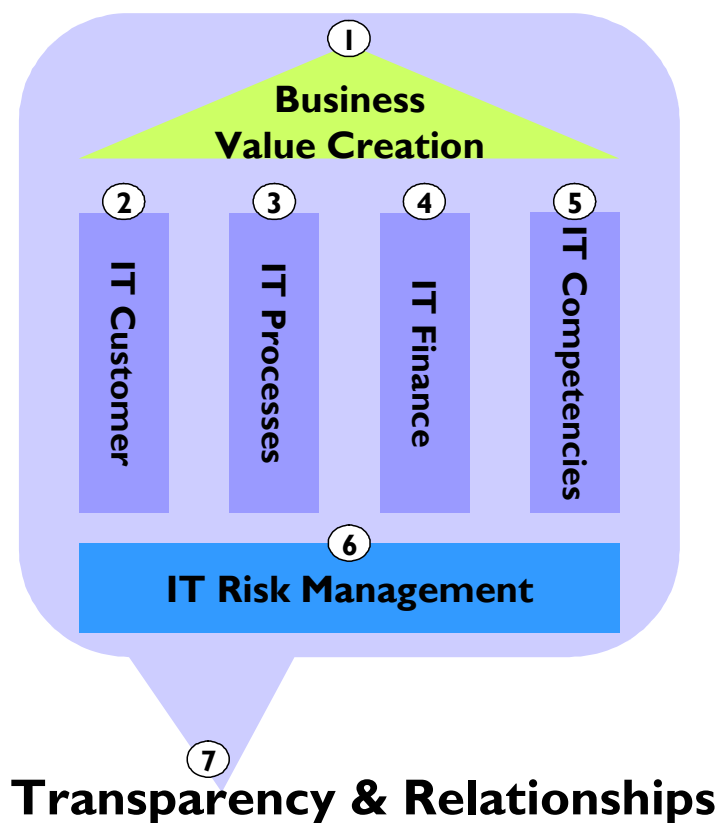
# What is IT Governance?

## 7 pillars

IT Governance is a management process based on best practices enabling the business to drive its IT function in order to:

- Support its value creation objectives
- Increase the performance of IT processes and their customer orientation
- Master the financial aspects of IT
- Develop IT solutions and competencies needed by the enterprise in the future
- Ensure that IT-related risks are managed

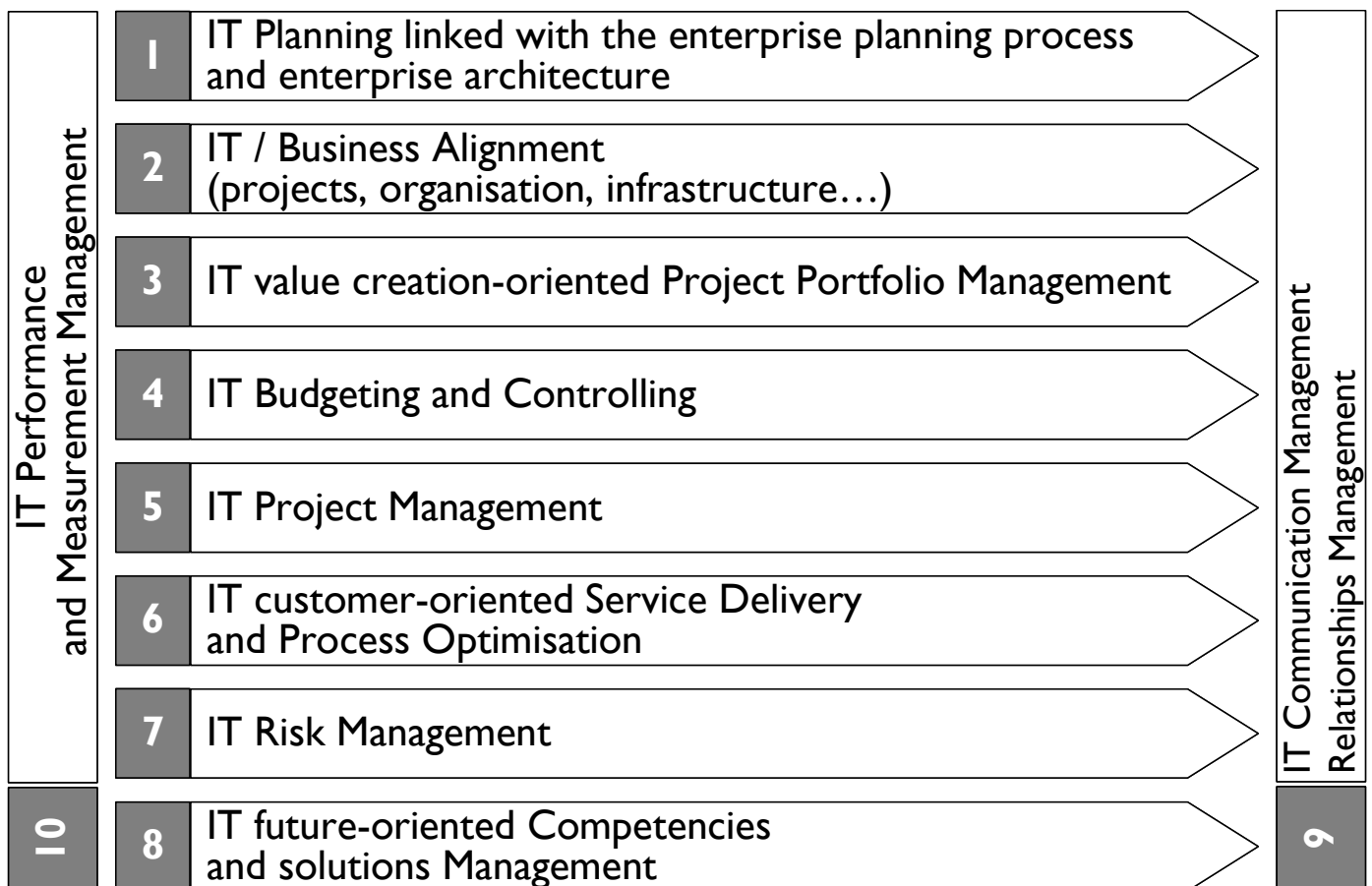
While developing transparency.





# Practices of IT Governance

- Implements these practices in a quality approach towards best practices



# Contribution of the 10 practices to the 7 pillars

	Business Value Creation	IT Customers	IT Processes	IT Finance	IT Competencies	IT Risk Management	Transparency and relationships
<b>IT Planning</b>	X	X			X	X	X
<b>IT / Business Alignment</b>	X	X				X	X
<b>IT value creation-oriented Project Portfolio Management</b>	X	X				X	X
<b>IT Budgeting and Controlling</b>		X		X		X	X
<b>IT Project Management</b>		X	X				X
<b>IT customer-oriented Service Delivery and Process Optimisation</b>		X	X		X	X	X
<b>IT Risk Management</b>			X			X	X
<b>IT future-oriented Competencies and solutions Management</b>			X		X		X
<b>IT Communication Management Relationships Management</b>	X	X					X
<b>IT Performance and measurement Management</b>	X	X				X	X

# Conclusion

---

- ❑ IT Governance is more than just a process-and-organisation recipe.
- ❑ IT Governance is first of all a management challenge taking into account the enterprise's culture.
- ❑ It is a long journey.

# Founders

Institut de la Gouvernance des Systèmes d'Information

---



## **AFAI**

**88, rue de Courcelles**

**75008 Paris**

**Tél. 01 55 62 12 22**

**Fax 01 47 47 70 43**

**E-mail : [afai@afai.fr](mailto:afai@afai.fr)**

**[www.afai.fr](http://www.afai.fr)**

## **CIGREF**

**21, avenue Messine**

**75008 Paris**

**Tél. 01 56 59 70 00**

**Fax 01 56 59 70 01**

**E-mail : [cigref@cigref.fr](mailto:cigref@cigref.fr)**

**[www.cigref.fr](http://www.cigref.fr)**

## **More about**

Institut de la Gouvernance des Systèmes d'Information:

**[www.itgi-france.com](http://www.itgi-france.com)**

